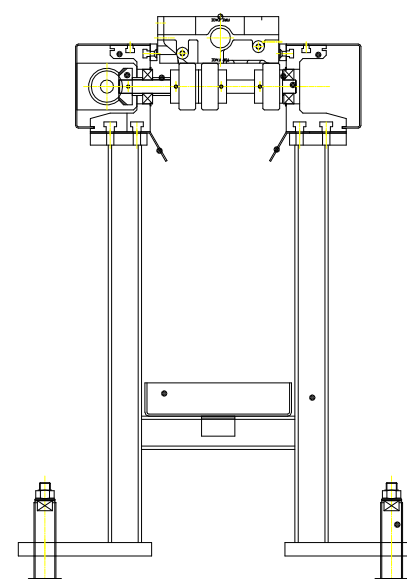
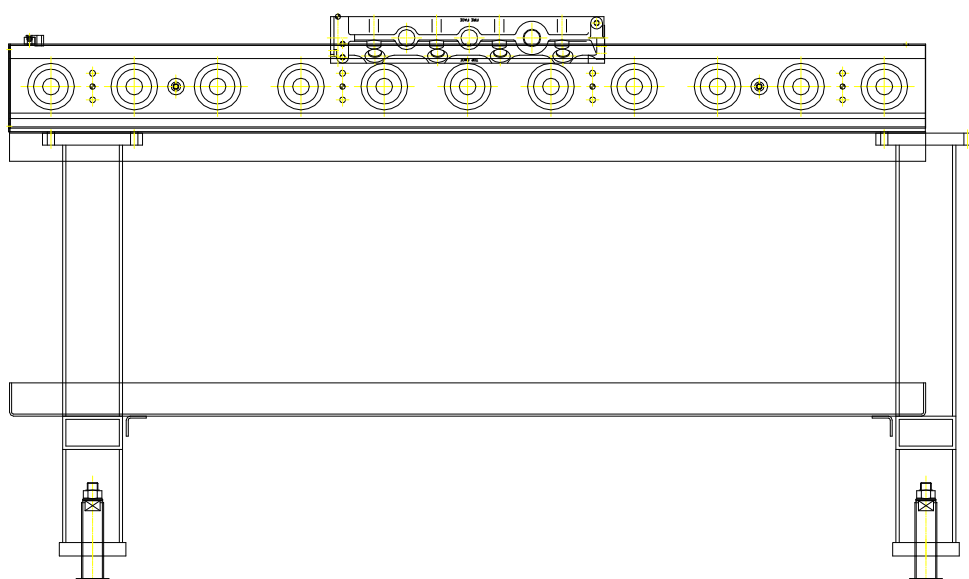


## EQUIPMENT DATA SHEET - 22

### POWER AND FREE ROLLER CONVEYOR

- The roller sections are designed to accumulate components up to a weight of 150Kg.
- Roller assemblies manufactured from sintered details, produced from authentic HAZMAC tooling (see data sheet – 1A).
- Roller assemblies are pinned onto cross shafts located within bearings pressed into precision-machined aluminum side frames.
- Drive transmitted to each roller shaft via a sintered bevel gear mating with a second sintered bevel gear located on a drive shaft running the length of the section.
- Section will be supplied with side guarding for finger trap protection.
- Support leg detail includes provision for height adjustment and final floor fixing.



PART COMING  
FIRE FACE UP  
EXHAUST FACE LEFT